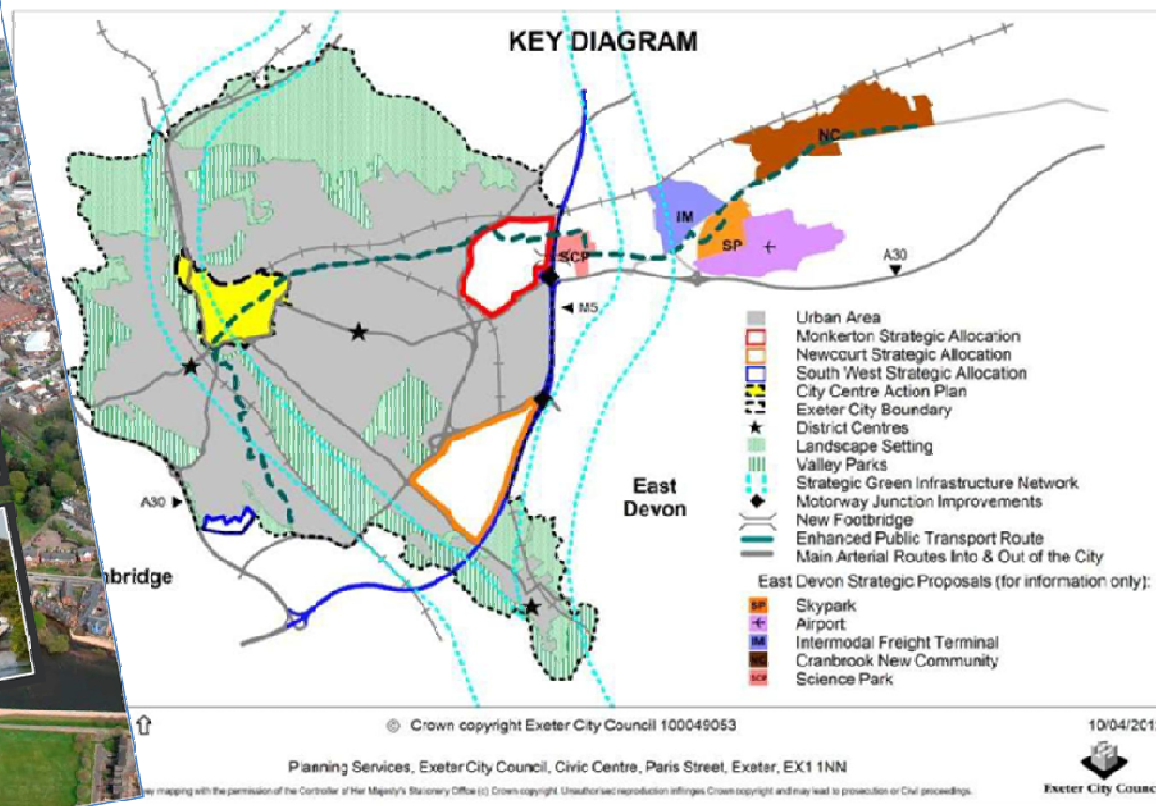
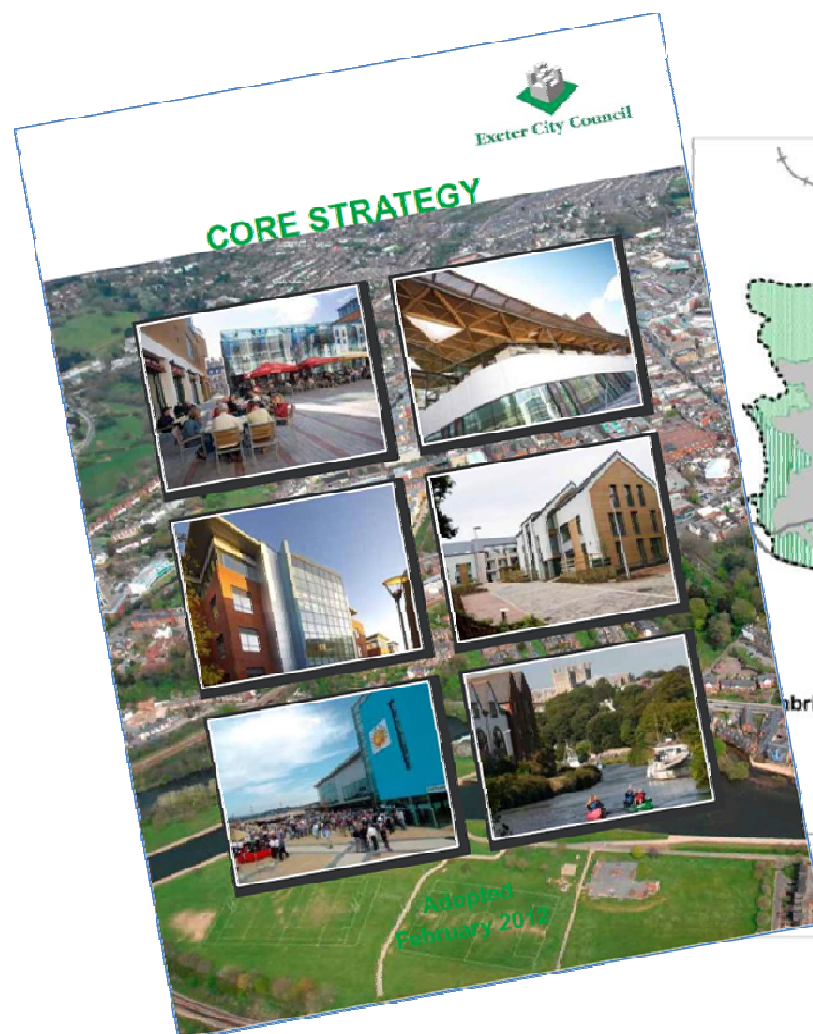


Minute Item 36



ADOPTED CORE STRATEGY POLICY CP13

CP13: Decentralised Energy Networks will be developed and brought forward. New development (either new build or conversion) with a floorspace of at least 1,000 square metres, or comprising ten or more dwellings, will be required to connect to any existing, or proposed, Decentralised Energy Network in the locality to bring forward low and zero carbon energy supply and distribution. Otherwise, it will be necessary to demonstrate that it would not be viable or feasible to do so. Where this is the case, alternative solutions that would result in the same or better carbon reduction must be explored and implemented, unless it can be demonstrated that they would not be viable or feasible.

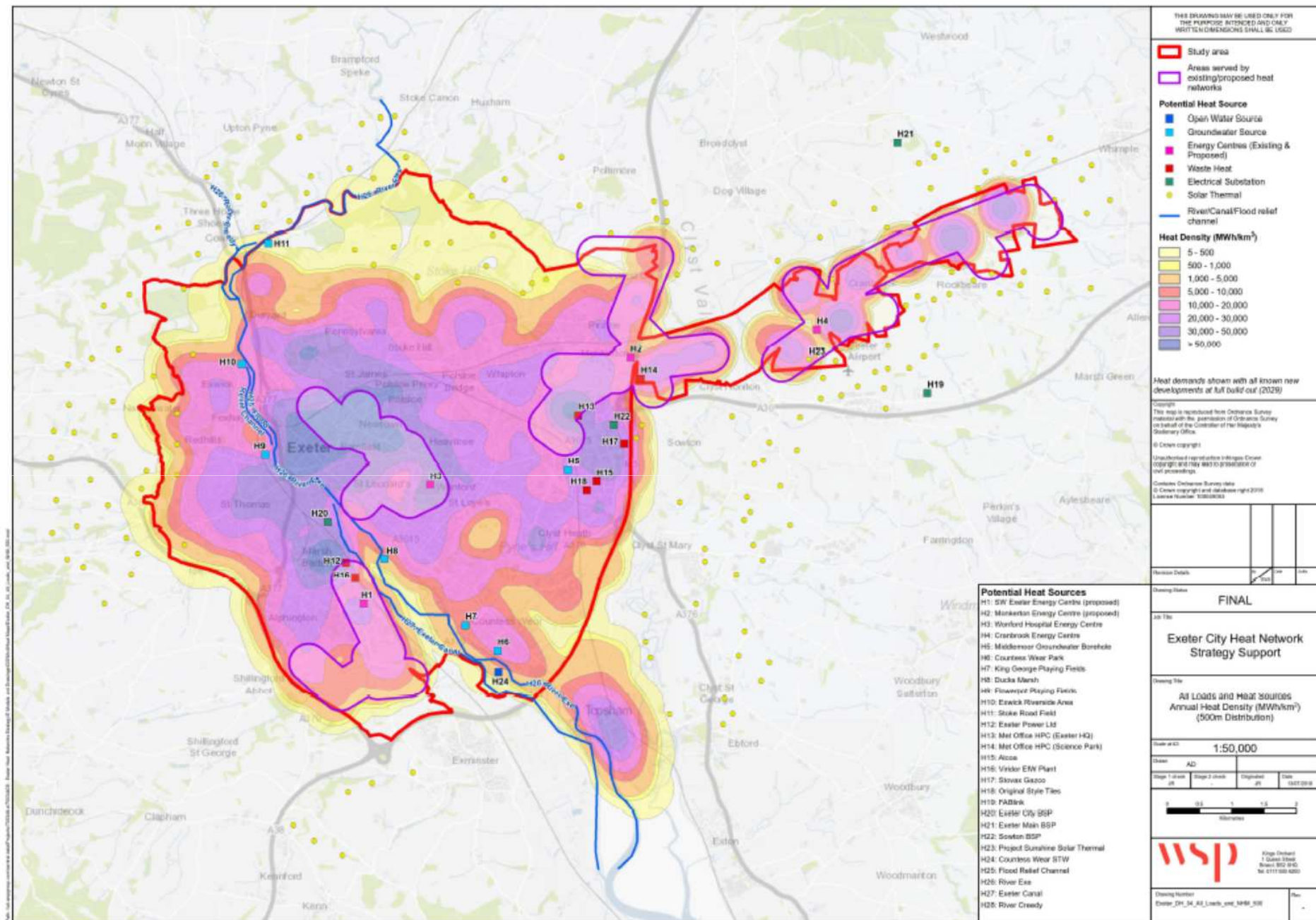


Figure 12 – Locally available heat sources shown on heat map

ADOPTED CORE STRATEGY POLICY CP15

CP15: Proposals for development are expected to demonstrate how sustainable design and construction methods will be incorporated. All development must be resilient to climate change (particularly summer overheating) and optimise energy and water efficiency through appropriate design, insulation, layout, orientation, landscaping and materials, and by using technologies that reduce carbon emissions.

Residential development will be required to achieve the above (Para 10.29) Code for Sustainable Homes Level (overall performance across the code categories and complying with minimum standards).

All non-domestic development will be required to achieve BREEAM 'Very Good' standards increasing to 'Excellent' standards from 2013. Non-domestic buildings are expected to be zero carbon from 2019.

Due to their scale the Monkerton/Hill Barton, Newcourt and Alphington urban extensions should achieve levels of sustainability in advance of those set out nationally.

The Code for Sustainable Homes

Code level	Energy standard (reduction from 2006 Part L)	Year
3	25%	2010
4	44%	2013
5	Zero carbon	2016

Carbon compliance and Zero Carbon

